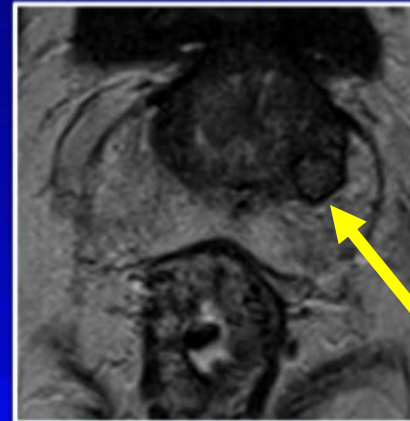
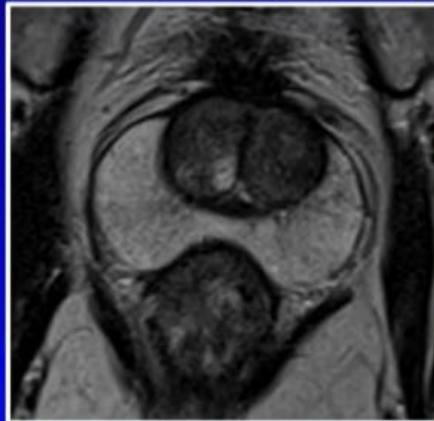


Transitional Zone

PI-RADS Assessment – T2W TZ

- Score 1:
 - Normal appearing TZ (rare)
 - Round, completely encapsulated nodule (typical nodule)

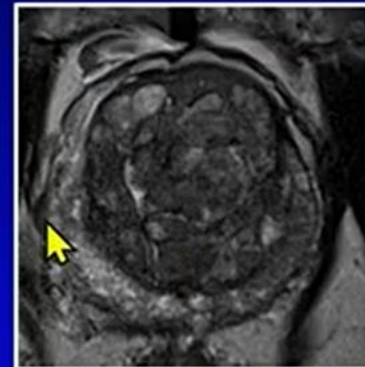


BPH

Transitional Zone

PI-RADS Assessment – T2W TZ

- Score 2:
 - Mostly encapsulated nodule
 - Homogeneous circumscribed nodule without encapsulation (atypical nodule)
 - Homogeneous mildly hypointense area between nodules



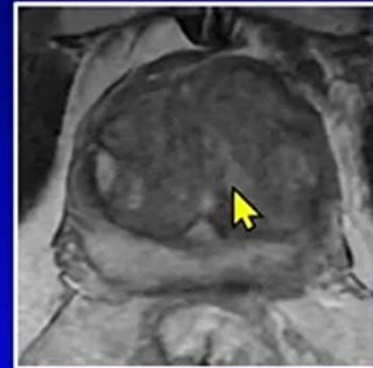
Play K

- Multiple Nodules
- Look for one that is different, otherwise you will overcall and drive your self crazy

Transitional Zone

PI-RADS Assessment – T2W TZ

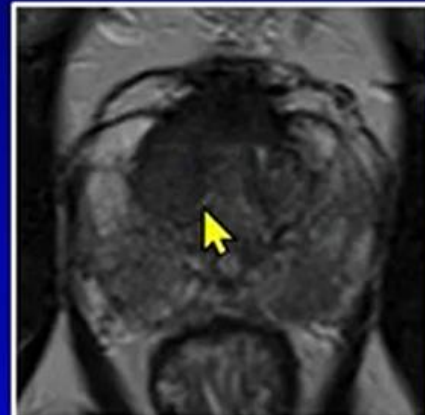
- Score 3:
 - Heterogeneous signal intensity with obscured margins
 - Includes others that do not qualify as 2, 4, or 5



Transitional Zone

PI-RADS Assessment – T2W TZ

- Score 4:
 - Lenticular or non-circumscribed, homogeneous, moderately hypointense, and <1.5cm in greatest dimension



Transitional Zone

PI-RADS Assessment – T2W TZ

- Score 5:
 - Same as 4
 - $\geq 1.5\text{cm}$ in greatest dimension
 - Definite extraprostatic extension/behavior

